

DRAWING NUMBER
51/142

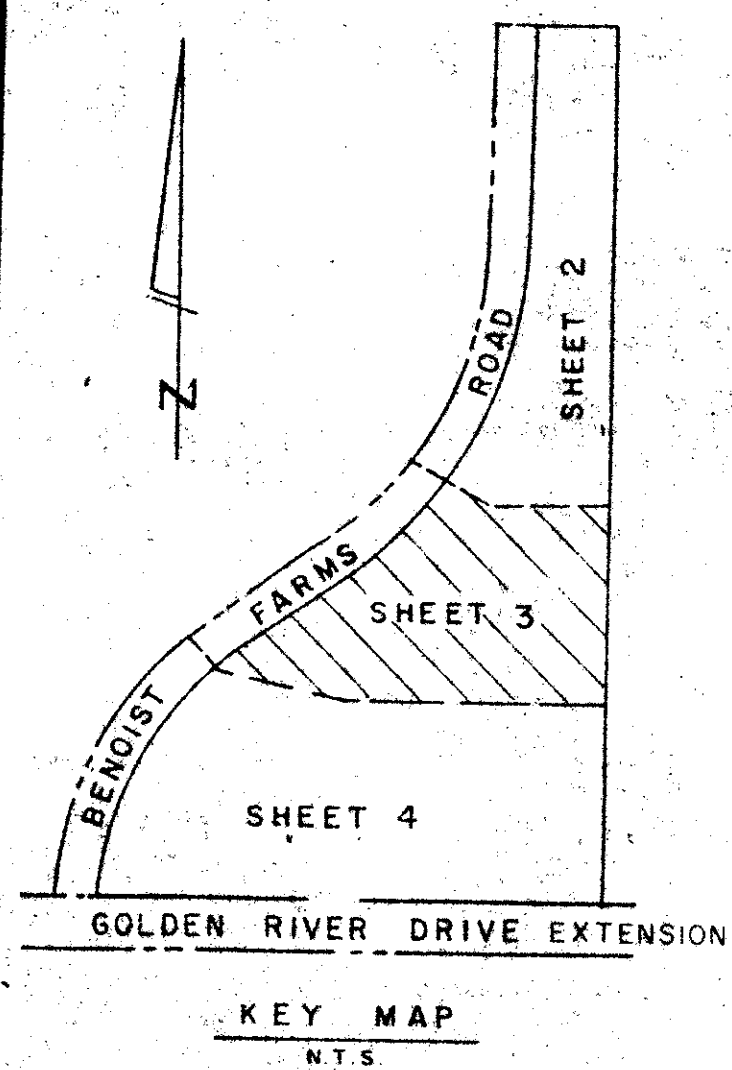
A PLANNED UNIT DEVELOPMENT - P.U.D. BEING A PORTION OF GOLDEN LAKES VILLAGE, P.U.D. PLAT NO. 1 OF LAKE CRYSTAL

BEING A REPLAT OF A PARCEL OF LAND LYING PARTIALLY IN THE PALM BEACH FARMS COMPANY PLAT NO. 9, AS RECORDED IN PLAT BOOK 5, PAGE 58 AND PARTIALLY IN THE PALM BEACH FARMS COMPANY PLAT NO. 3, AS RECORDED IN PLAT BOOK 2, PGS. 45-54, OFFICE OF PUBLIC RECORDS, PALM BEACH COUNTY, FLORIDA.
SECTION 29, TWP 43S RGE 42E

SHEET 3 OF 4

FEBRUARY 1985

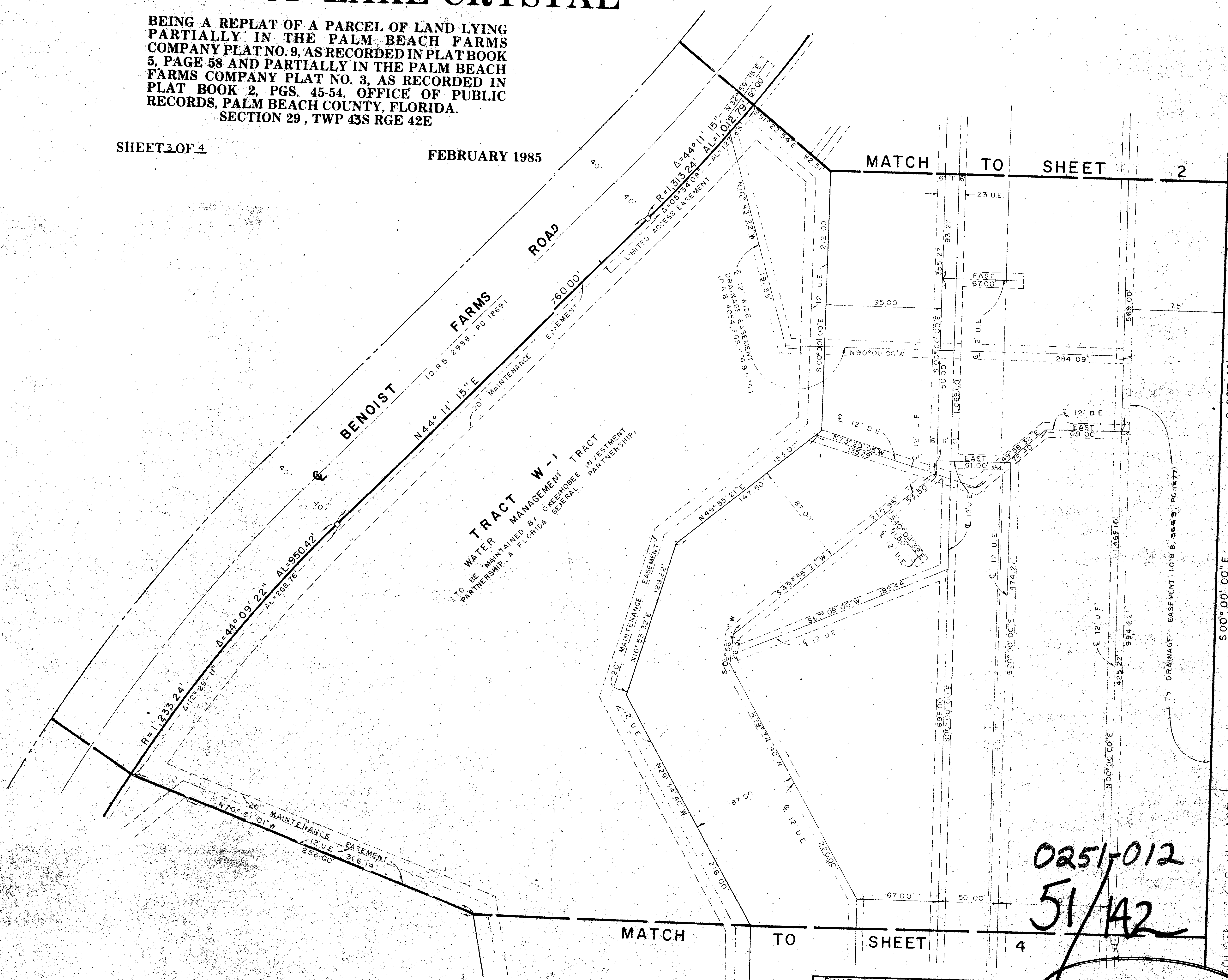
142
COUNTY OF PALM BEACH
STATE OF FLORIDA
This Plat was filed for record at
this day of
19 and duly recorded in Plat Book No.
on page
JOHN DUNKLE, Clerk, Circuit Court
By



DRAWING NUMBER

DRAWING NUMBER

DRAWING NUMBER



0251-012
51/142

| | | |
|------------|--------------|-----|
| Field Book | No. | Pg. |
| Design | J. F. Fritts | |
| Drawn | L. C. Bispo | |
| Checked | | |

ROBERT E. OWEN & ASSOCIATES, INC.
ENGINEERS - PLANNERS - SURVEYORS
WEST PALM BEACH
FLORIDA

PLAT NO. 1 OF
LAKE CRYSTAL

| | |
|---------|-----------|
| Job No. | 84-1085 |
| Scale | 1" = 40' |
| Date | FEB, 1985 |
| Sheet | 3 |
| of 4 | |
| File | |

GOLDEN LAKES VILLAGE SECTION SEVEN
GOLDEN LAKES VILLAGE SECTION THREE
(PLAT BOOK 30, PAGES 165-167)